

Smoke Extract Fans SafeAir



NICOTRA | Gebhardt

You have to understand fire to master **smoke extraction**



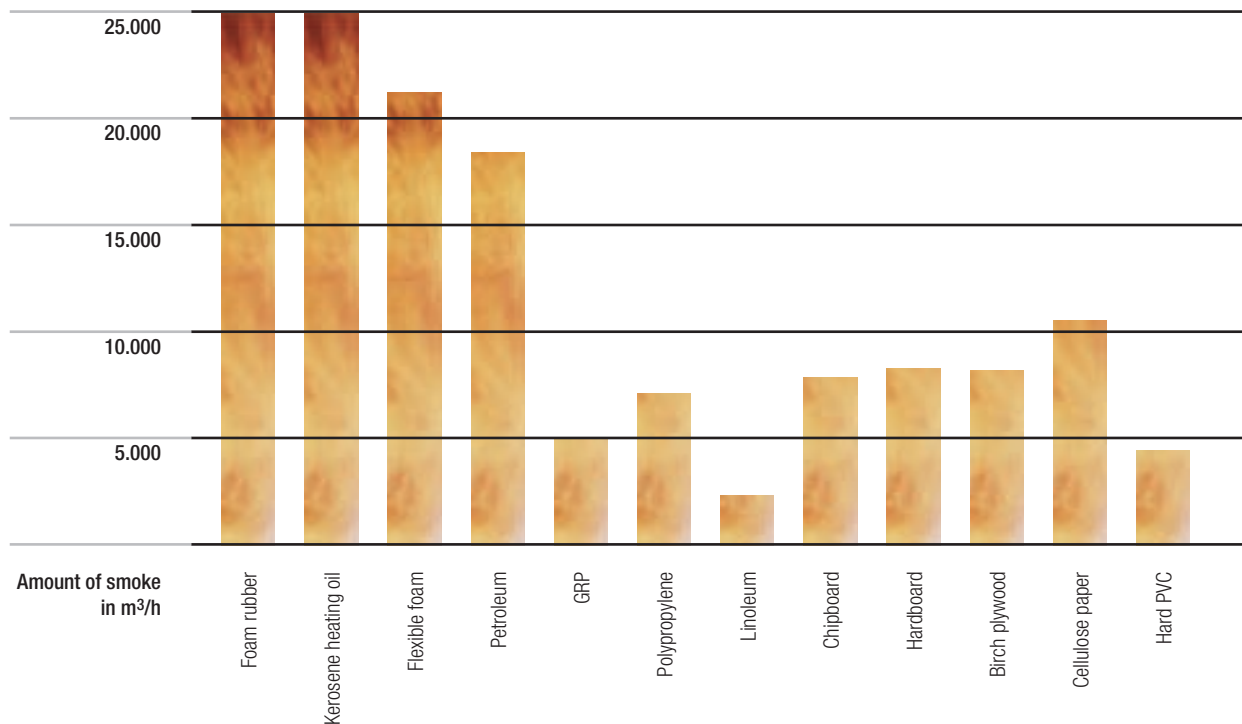
Perfect smoke extraction in the case of fire not only demands absolute understanding of the techniques used – it also calls for an understanding of the nature of fire and the flow of fumes. **Nicotra Gebhardt** sets standards in both aspects – by using CFD to simulate the flow of smoke, for example.



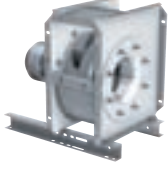
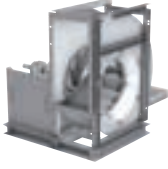



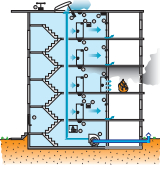
We can offer you the world's largest range of mechanical smoke extraction solutions – compiled in this brand new SafeAir catalogue. With our wall, roof, radial, axial and pulse fans,

we master every form of smoke extraction, whatever the application. We thereby ensure maximum safety throughout any building – from the underground car park to the roof – and comply with all the statutory norms for building fire protection.

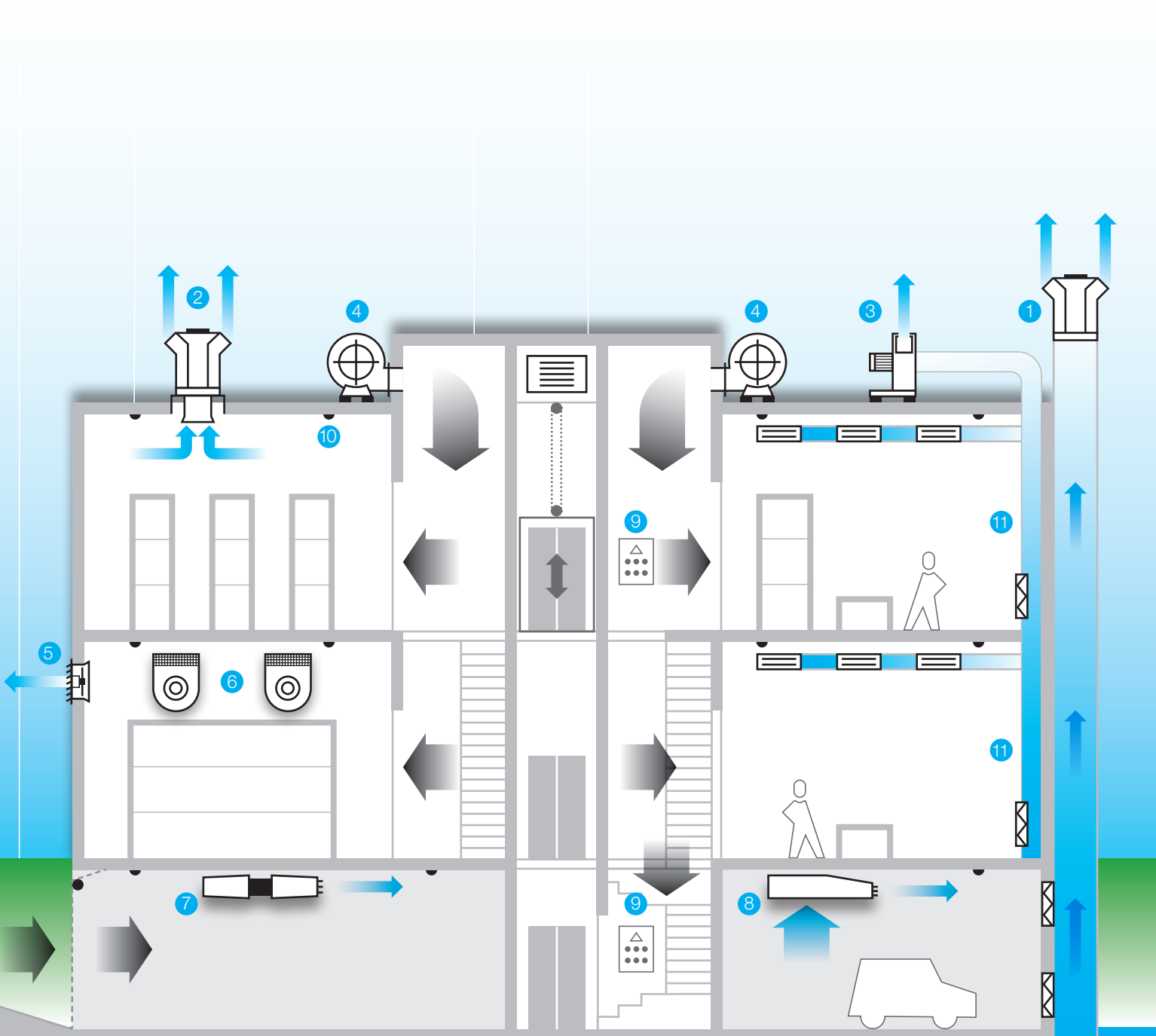
Find out about our range of modern smoke extraction systems in this catalogue and see for yourself what good value intelligent smoke extract fans from **Nicotra Gebhardt** are. And above all: act on it before it is too late! We would be happy to advise you.

Conflagration gases and fumes emitted by burning 10 kg of each material



RDM 56 RDM 57		•	•	•	•					•	•	•	↑	•					•		
RWM 57		•	•	•						•	•	•	→	•					•		
REM BU REM BI		•	•							•	•	•	↕	•					•	•	
RER 13 RER 17		•	•	•	•	•	•			•	•		↕		•			•	•	•	
SLCS		•	•	•	•	•				•			↕	•				•			
AGM		Thrust up to 52 N									•			↔	•				•	•	
RGM		Thrust up to 75 N									•			↔	•				•	•	
PPSP-System		As necessary													•	•					
		14.000 m³/h	31.000 m³/h	37.000 m³/h	57.000 m³/h	65.000 m³/h	150.000 m³/h	300 °C – 120 min	400 °C – 120 min	600 °C – 120 min			Discharge	Direct drive	Belt drive	Aluminium	Galvanised steel	Coated steel	Insulating casing		
	Flow rate							Conveying medium						Drive type	Material						

Safe smoke extraction solutions from the cellar to the roof!



- | | | |
|---|---|-----------------------------|
| 1 <i>genovent</i> smoke extractor roof fans, RDM 57 | 5 SLCS axial smoke extractor fan | 9 Smoke detector switchgear |
| 2 <i>genovent</i> smoke extractor roof fan, RDM 56 | 6 RWM 57 smoke extractor wall fan | 10 Optical smoke detector |
| 3 Radial smoke extractor fan, REM BU/RER 13; 17 | 7 AGM Jetfan <i>prevent</i> smoke extractor pulse fan | 11 Duct – F 90 |
| 4 2 Radial fans for PPV system | 8 RGM Jetfan <i>prevent</i> smoke extractor pulse fan | |

Smoke Extract Roof Fans
RDM 56/57 *genovent*[®]

Vertical discharge, motor separated from airflow, with outlet flaps, snow load class SL 1000

- Specifications
- Relative noise level
- Sample applications
- Accessories



Smoke Extract Wall fans
RWM 57

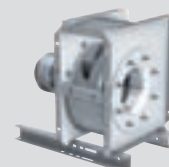
Horizontal discharge, for wall installation, motor separated from airflow

- Specifications
- Relative noise level
- Sample applications
- Accessories



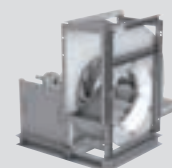
Smoke Extract Centrifugal Fans with direct drive REM
REM BU without insulating casing
REM BI with insulating casing

- Specifications
- Sample applications
- Accessories



Smoke Extract Centrifugal Fans with belt drive RER *rotavent*[®]
RER 13 – welded, coated
RER 17 – lock-seamed, galvanised

- Specifications
- Technical specifications
- Accessories



Axial Smoke Extract Fan Unit with direct drive with direct drive SLCS

Axial fan based on the pulse fan principle, conflagration gas motor in airflow

- Specifications
- Accessories



Impulse Smoke Extraction Fans
Jetfan AGM

Axial fan based on the pulse fan principle, conflagration gas motor in airflow

- AGM 01/11, AGM 02/12, 300 °C – 120 min.
- Specifications AGM 01/11, AGM 02/12
- AGM 06/16 for ventilation of CO-gases
- Specifications AGM 06/16



Impulse Smoke Extraction Fans
Retfan AGM

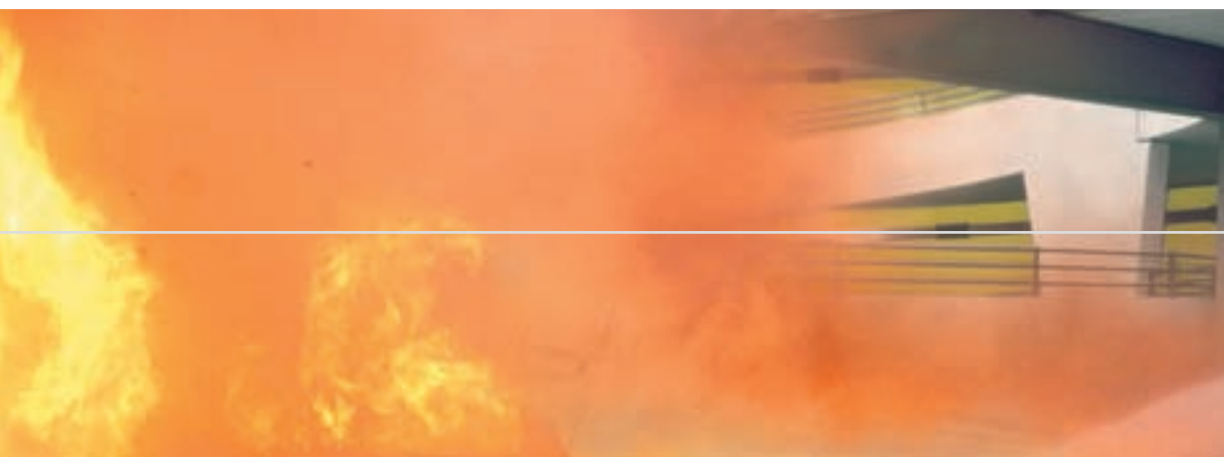
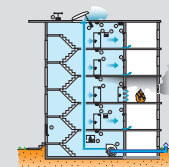
Centrifugal fan based on the pulse fan principle, conflagration gas motor in airflow

- RGM 91, 300 °C – 120 min.
- Specifications RGM 91
- RGM 96 for ventilation of CO-gases
- Specifications RGM 96



Positive Pressure Smoke Protection – System

For indoor stairwells, corridors and emergency tunnels



Nicotra Gebhardt worldwide

SPAIN

Ctra. Alcalá-Villar del Olmo, Km. 2,830
28810 Villalbilla-Madrid
Phone +34 918-846110
Fax +34 918-859450
E-mail info@nicotra.es

c/.Coso, 67-75, esc. 1.a,1.oB
50001 Zaragoza
Phone +34 976-290550
Fax +34 976-298127
E-mail gebhardt@teleline.es

BELGIUM

Haeghensgoed, 13 - 00/01
9270 Laarne
Phone +32 (0)9-336-00-01
Fax +32 (0)9-336-00-05
E-mail info.nicotra@nicotra.be

FRANCE

8 chemin des Mûriers BP 324
69745 Genas cedex.
Phone 0033 (0)472790120
Fax 0033 (0)472790121
E-mail nicotra.france@wanadoo.fr

SWEDEN

Box 237
Kraketorpsgatan 30
43123 Mölndal
Phone 0046 31-874540
Fax 0046 31-878590
E-mail info@nicotra-gebhardt.se
<http://www.nicotra-gebhardt.se/>

GREAT BRITAIN

Unit D, Rail Mill Way
Parkgate Business Park
Rotherham
South Yorkshire
S62 6JQ
Phone +044 01709-780760
Fax +044 01709-780762
E-mail sales@nicotra.co.uk

Monarch House
1-7 Smyth Road
Bedminster
Bristol
Phone +44 (0)870 043-5207
Fax +44 (0)870 043-5212
E-mail info@kiloheat.co.uk
<http://www.kiloheat.co.uk/>



MALAYSIA

Lot 1799, Jalan Balakong
Taman Perindustrian Bukit Belimbing
43300 Seri Kembangan
Selangor
Phone +603 8961-2588
Fax +603 8961-8337
E-mail info_malaysia@nicotra-gebhardt.com

THAILAND

6/29 Soi Suksawadi 2, Moo 4, Suksawadi Road,
Kwang Jomthong, Khet Jomthong,
Bangkok 10150
Phone +662 476-1823-6
Fax +662 476-1827
E-mail sales@nicotra.co.th

SINGAPORE

No. 15 West Coast Highway
04-08 Pasir Panjang Building
Singapore 117861
Phone (065) 6265-1522
Fax (065) 6265-2400
E-mail info@gebhardt-singapore.com

AUSTRALIA

47 Jessica Road,
Campbellfield, VIC 3061
Phone +613 9357-7464
Fax +613 9357-8700
E-mail info@nicotra.com.au

INDIA

Plot no 28f, Sector-31
Kasna, Greater Noida-201308
U.P. INDIA
Phone +91 0120-4203400
Fax +91 0120-4203401
E-mail sales@nicotraindia.com

CHINA

88 Tai'An Road, XinQiao, ShiJi, Panyu
Guangzhou 511450
PR CHINA
Phone +86 (0)20-39960570
Fax +86 (0)20-39960569
E-mail sales@nicotra-china.com

UNITED STATES

1503 W. Misty Breeze Cir
Kaysville, UT 84037
Phone 001(801) 544-9909
Fax 001(801) 315-9400
Mobile 001(801) 694-0353
E-mail rob.elliott@gebhardtffans.com

NICOTRA | Gebhardt

Nicotra Gebhardt S.p.A
Via Modena, 18
24040 Zingonia (Bergamo)
Italy

Phone +39 (0)35 873 111
Fax +39 (0)35 884 319
E-Mail info@nicotra-gebhardt.com

www.nicotra-gebhardt.com

Nicotra Gebhardt GmbH

Gebhardtstrasse 19-25
74638 Waldenburg
Germany

Phone +49 (0)7942 101 0
Fax +49 (0)7942 101 170
E-Mail info@nicotra-gebhardt.com

www.nicotra-gebhardt.com

fan|tastic solutions